



PROJECT		REF		REV	ITEM CODE	
LOCATION		DATE			PAGE	

## SANITARY WARE SPECIFICATION SHEET

<p><b>Item Descriptions</b></p> <p>Sloan (USA) "Basys" line powered, infrared, sensor activated, electronic, chrome plated die cast body, hand washing faucet for pre-tempered or hot and cold water operation, 0.5gpm/ 2Lpm Mult-Lam Spray, DC supply</p>	<p><b>Model</b></p> <p>EFX-250.000.0000</p> <p><b>Finish</b></p> <p>Chrome Plated</p> <p><b>Manufacturer</b></p> <p>Sloan (USA Brand)</p> <p><b>Supplier</b></p> <p>Acme Sanitary Ware Co. Ltd          Mr. Eric Wong/ Mr. Don Yuen</p> <p><b>Contact Tel/Fax</b></p> <p>(852) 2388-7171 / (852) 2710-8012</p> <p><b>E-mail</b></p> <p>acme@acmesanitary.com.hk</p>	<p style="text-align: center;">Illustration/ Drawing</p> <div style="display: flex; justify-content: space-between; align-items: center;"> </div> <div style="text-align: center;"> </div> <div style="margin-top: 20px;"> </div> <div style="margin-top: 10px; display: flex; justify-content: space-around; align-items: center;"> <div style="text-align: center;"> <p>LOW-LEAD</p> </div> <div style="text-align: center;"> </div> <div style="text-align: center;"> <p style="font-size: 8px;">This product may contribute to LEED credits. See details on LEED calculation worksheet.</p> </div> </div> <p style="font-size: 8px; margin-top: 10px;">The product shall be tested and certified to industry standards: ASME A112.18.1M, CSA B125.1, California Health and Safety Code 116875 (AB1953-2006), and Vermont Bill S.152. This product meets ADA ANSI/ICC A117.1 requirements.</p>
<p><b>Specifications</b></p> <p>Line Powered, Sensor Activated, Electronic, Chrome Plated Die Cast Body, Hand Washing Faucet with the following features:</p> <ul style="list-style-type: none"> <li>All serviceable components above deck</li> <li>One tool service</li> <li>All wetted components to be stainless steel, engineered thermoplastic, EPDM, and copper or copper alloy</li> <li>Solenoid housed in removable carrier that includes supply strainer</li> <li>Integral water supply shut off</li> <li>Supply strainer serviceable from above deck</li> <li>Vandal resistant spray insert, key housed inside faucet body</li> <li>All electronics sealed to IP-67</li> <li>Gold plated electrical contacts</li> <li>Above deck individual diagnostic indicators for battery life, solenoid condition, and power up mode</li> <li>Flexible, high pressure supply hoses, 3/8" compression connections</li> <li>Bi-stable magnetic solenoid</li> <li>Four (4) "AA" alkaline batteries</li> <li>Double infrared sensors with automatic setting feature</li> <li>Single hole installation</li> <li>Includes all mounting hardware</li> <li>Line purge mode, eliminates stagnant water</li> <li>Adjustable time-outs</li> <li>Faucet can be configured to add solar and/or LCD display</li> <li>Line powered using a variety of voltage adapters (batteries act as a backup)</li> <li>Mechanical mixing, integral to spout, optional</li> </ul>		

\* All information of the above is for reference only. No prior notice is made if any changes.



PROJECT		REF		REV	ITEM CODE	
LOCATION		DATE			PAGE	

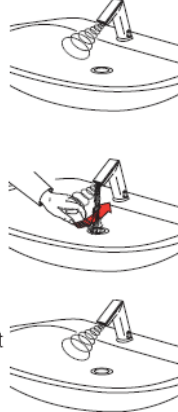
## SANITARY WARE SPECIFICATION SHEET

### ELECTRICAL SPECIFICATIONS

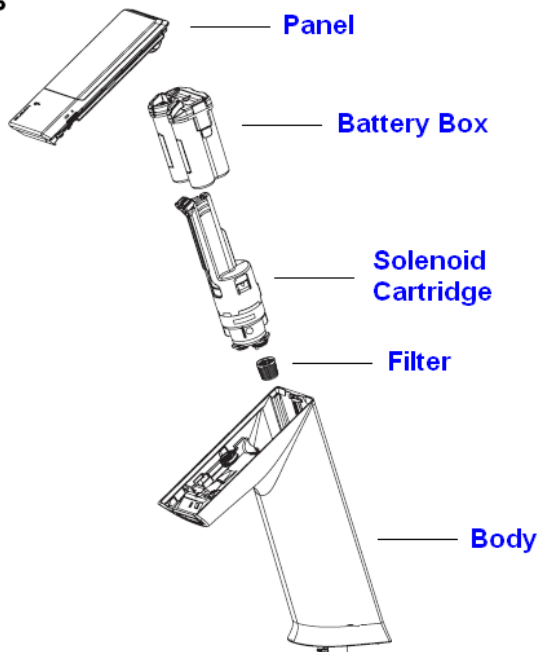
- ▶ Control Circuit  
6.75 VDC
- ▶ Sensor Range  
*Nominal:*  
4" - 5" (102 mm - 127 mm)  
*Faucet Adaptive Self-adjustment Range:*  
2" - 14" (51 mm - 356 mm) nominal
- ▶ Power Supplies
  - 6 VDC Alkaline Battery Pack
  - 120 VAC/6.75 VDC Voltage Adapter (Option) Batteries Act as Backup Shown with EFX-200.500.0000
- ▶ Time Out Setting  
30 seconds — Maximum time faucet will run upon continuous detection
- ▶ Can combine up to six (6) faucets on one voltage adapter

### OPERATION

1. A continuous, invisible light beam is emitted from the sensor located at the front of the hand washing faucet.
2. As the user's hands enter the beam's effective range, the beam is reflected back into the sensor receiver and activates the solenoid valve allowing water to flow from the faucet. Water will flow until the hands are no longer sensed or until the faucet reaches its automatic time out limit setting.
3. When hands are moved away from the sensor, the loss of reflected light initiates an electrical signal that closes the solenoid valve shutting off the water flow. The circuit then automatically resets and is ready for the next user.

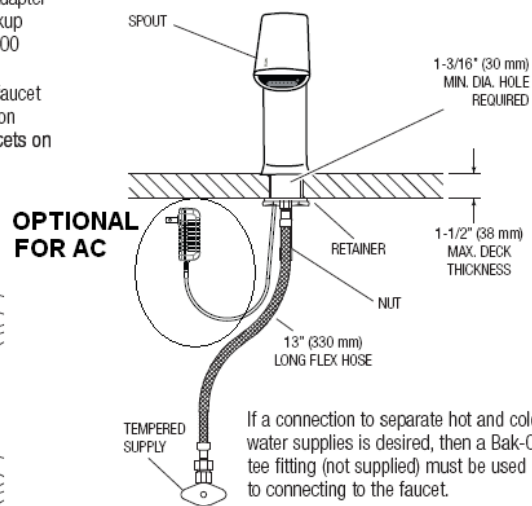


### PARTS



### ROUGH-IN

#### Faucet with Single Line Water Supply



If a connection to separate hot and cold water supplies is desired, then a Bak-Chek® tee fitting (not supplied) must be used prior to connecting to the faucet.